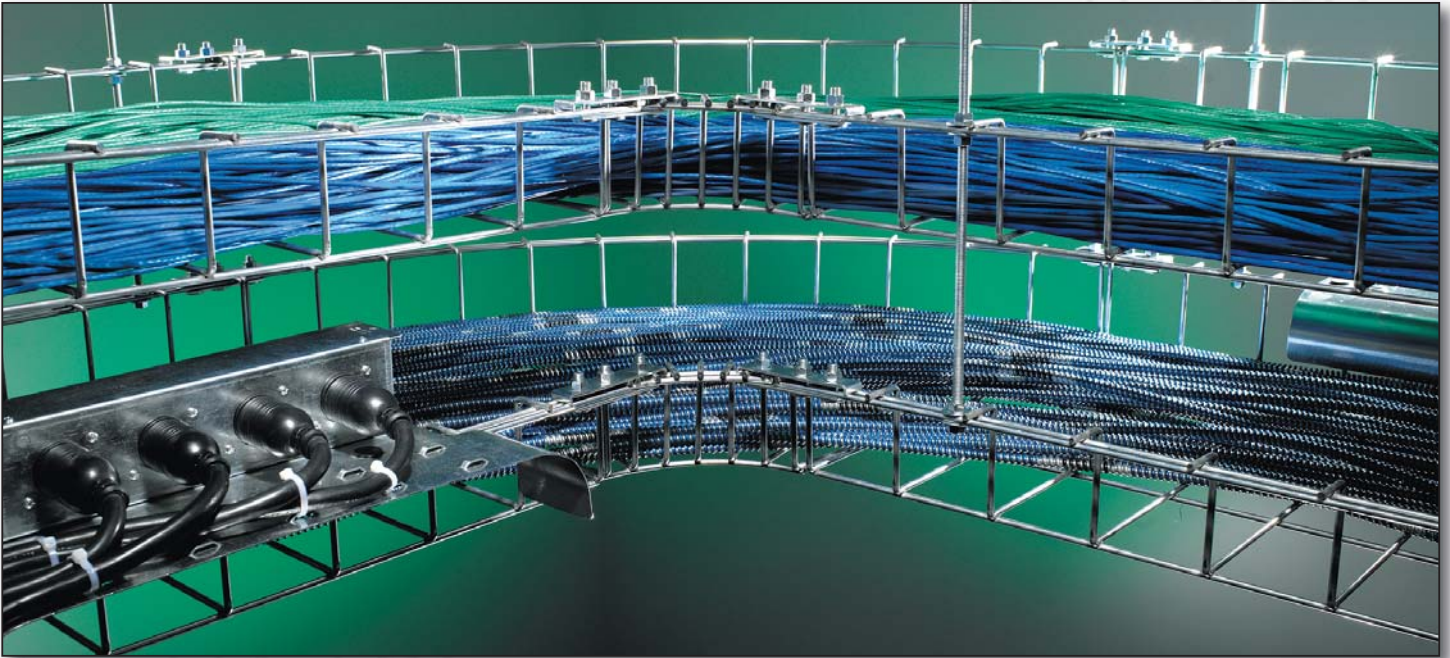




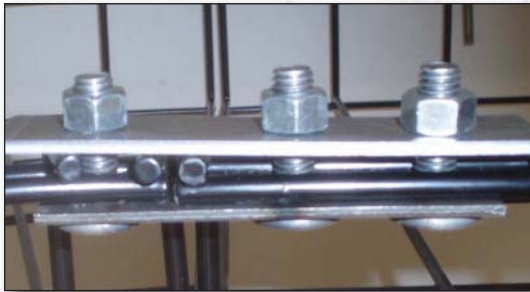
## CM 801 Mega Snake™ Installation Instructions

CABLE MANAGEMENT SOLUTIONS, INC.

CABLE MANAGEMENT AND POWER DISTRIBUTION



*Thank you for purchasing Mega Snake, Snake Tray's newest cable management solution. Mega Snake is so quick and easy to install we want to be sure you reap the benefits of its quick installation.*



### **To suspend Mega Snake™ or hang additional accessories from Mega Snake:**

Mega Snake (CM 801 Series) has built-in Snake Rails™ used to secure 3/8" threaded rod, supported 48" to 60" OC as per EIA/TIA recommendations, to suspend the tray from above as well as mounting accessories to the tray system. Thread the upper nut to the desired installation height for the Mega Snake tray system. Next slide a flat washer on the threaded rod followed by the Mega Snake tray section. Install a lower flat washer and nut below the Mega Snake and tighten. That's it – no strut or additional hardware required.



### **To connect the sections of Mega Snake™ together:**

Mega Snake straights, turns or intersections are joined together using the Mega Snake splice kit (Part number CM 801-18-SP or CM 801-24-SP). This kit provides you with a splice that mounts to the Snake Rail™ on both side of the tray system.

To install simply align the tray sections and install the bottom splice plate with weld studs through the two tray sections. Install the upper splice plate over the studs and secure with supplied nuts.

291 SKIP LANE • BAY SHORE, NEW YORK 11706 USA



**To exit cable from Mega Snake™ (installing a turnout):**

At the beginning or termination of a run of Mega Snake cable tray, a Mega Snake turn out should be installed to maintain the bend radius of all cables entering or exiting the tray system. To install a turn out, place the unit over the last wire in the tray system and index it on the second wire in the tray. You would then install four cables ties, two on each of the outer sides of the turn out, by placing them through the holes punched in the turn out and going around the wires of the tray as shown below. Complete the installation by drawing the ties tight and trimming off excess material.

*If you have questions or require additional information, please contact us at 800-308-6788.*